

BENCH MARK

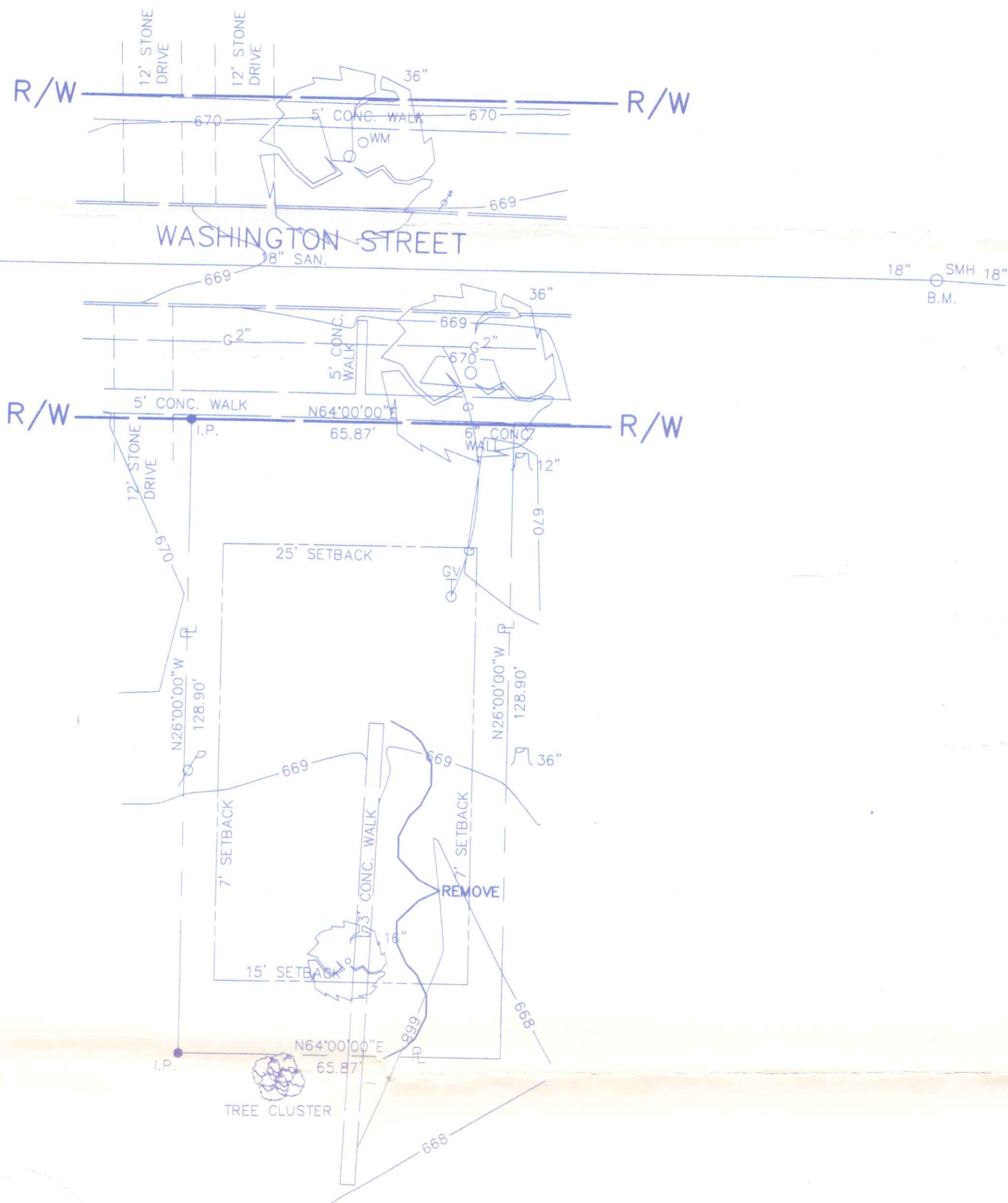
TOP RIM OF SMH @
INTERSECTION OF STOUT ST.
AND WASHINGTON ST.

ELEV. = 667.97

GRAPHIC SCALE



(SCALE 1" = 20')



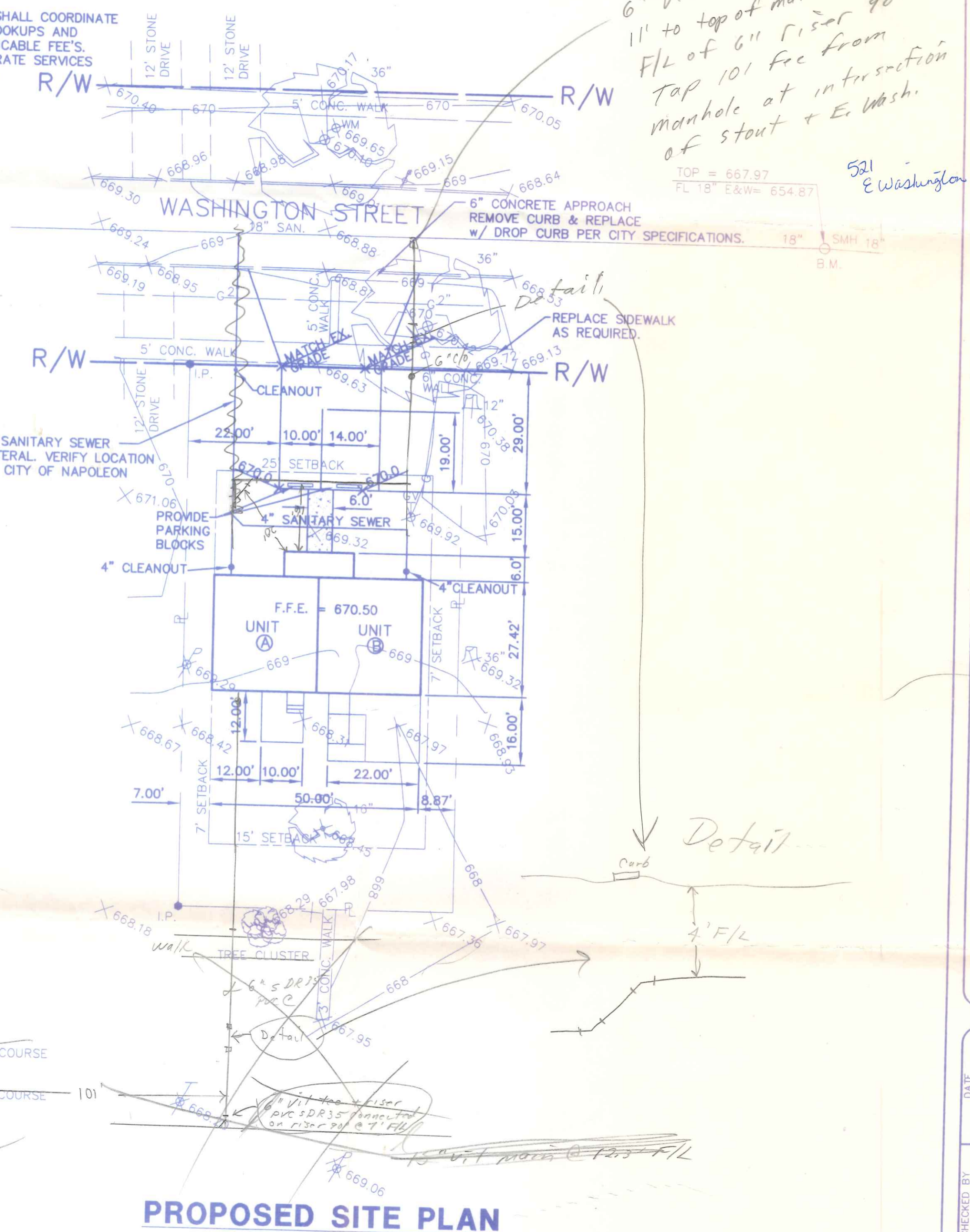
EXISTING SITE PLAN

GRAPHIC SCALE



(SCALE 1" = 20')

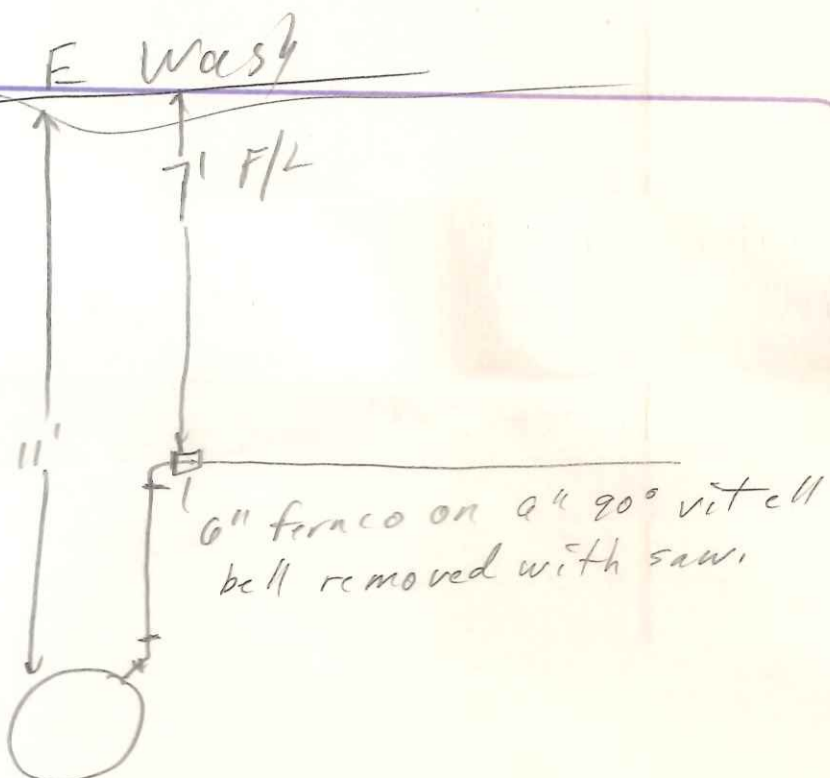
CONTRACTOR SHALL COORDINATE ALL UTILITY HOOKUPS AND PAY ALL APPLICABLE FEES. PROVIDE SEPARATE SERVICES TO EACH UNIT.



- 1 ITEM 404 1 1/2" AC-20 SURFACE COURSE
- 2 ITEM 402 1 1/2" AC-10 LEVELING COURSE
- 3 ITEM 304 6" AGGREGATE BASE

TYPICAL SECTION

PROPOSED SITE PLAN



6" vit riser on 4" 90° vitell
11" to top of main 71 to
F/L of 6" riser 90°
Tap 101 fee from
manhole at intersection
of stout + E. Wash.

TOP = 667.97
FL 18" E&W = 654.87

581 E Washington

ANY INFORMATION OR DATA ON THIS DRAWING IS NOT INTENDED TO BE SUITABLE FOR REUSE BY ANY PERSON, FIRM OR CORPORATION OR ANY OTHERS ON EXTENSIONS OF THIS PROJECT OR FOR ANY USE ON ANY OTHER PROJECT. ANY REUSE WITHOUT WRITTEN VERIFICATION AND ADAPTATION BY THE ENGINEER, ARCHITECT OR SURVEYOR FOR THE SPECIFIC PURPOSE INTENDED WILL BE AT THE USER'S SOLE RISK AND WITHOUT LIABILITY OR LEGAL EXPOSURE TO THE ENGINEER, ARCHITECT OR SURVEYOR.

SITE PLAN - WASHINGTON STREET, NAPOLEON



POGGEMEYER DESIGN GROUP, INC.
ARCHITECTS
417 WAYNE AVENUE
NAPOLEON & DEFIANCE, OHIO 43512
PLANNERS
ENGINEERS
P.O. BOX 7040
DEFIANCE, OHIO 43512

NEW HOME DEVELOPMENT CO.
DUPLEXES
NAPOLEON & DEFIANCE, OHIO

DRAWN BY MEK	CHECKED BY KAM	DATE 2/15/99
REVISION		

C1 / C3
JOB NUMBER
7029-006